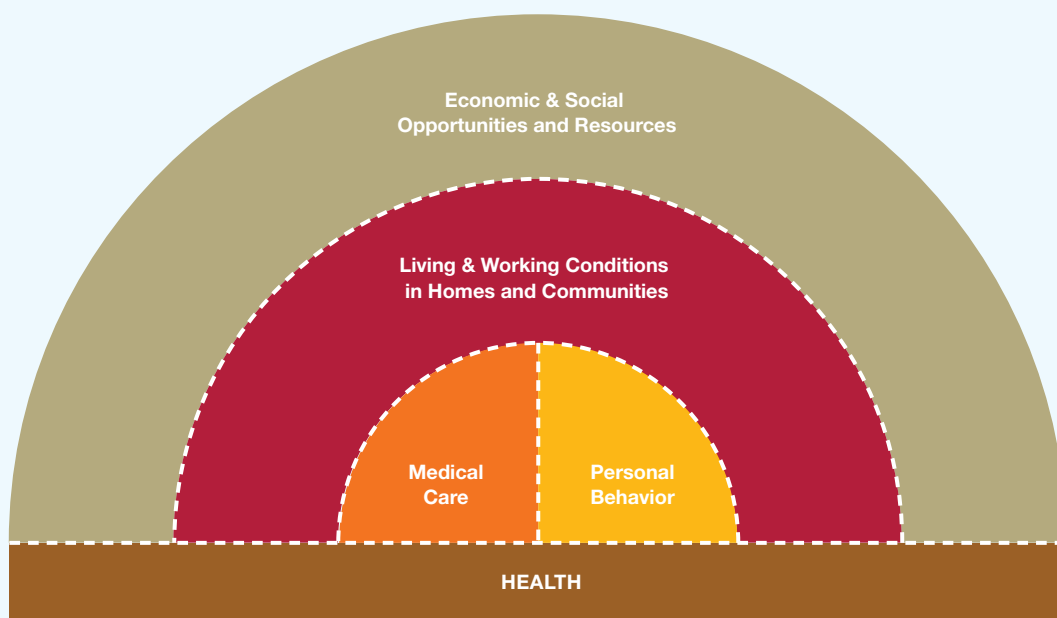


Influences on Health: Broadening the Focus

Health is shaped by many influences, including age, sex, genetic make-up, medical care, individual behaviors and other factors not shown in this diagram. Behaviors, as well as receipt of medical care, are shaped by living and working conditions, which in turn are shaped by economic and social opportunities and resources.



Prepared for the Robert Wood Johnson Foundation by the Center on Social Disparities in Health at the University of California, San Francisco.